



## ADJUSTABLE SPRING POWER - OVERHEAD CONCEALED CLOSER

# D300 SERIES

GRADE 2



**5 YEAR WARRANTY**

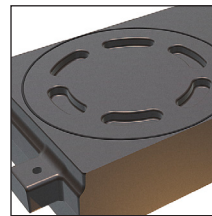
[Click Here For Info.](#)

### FEATURES

- I.D.C. provides **LEAK-FREE guaranteed performance** under the most demanding conditions.
  1. Steel spring cap is now on top of closer body utilizing a new high performance O-Ring and epoxy sealed threads for double protection.
  2. New automotive type heavy duty spindle seal replacing old standard O-ring technology.
  3. Adjustment valves now with two high performance O-rings for double protection.
  4. Steel end caps incorporating new high performance O-rings and also epoxy sealed threads for double protection.
- **ADA** closer with Adjustable Spring Power for a range of sizes from 5 lb. to 8.5 lb. **LIGHT & MEDIUM.** Spring Tension, fully adjustable after installation.
- Barrier Free Operation to comply with Federal Accessibility Standards (ADA): complying with ANSI A117.1 (4.13.11) available for center pivoted applications.
- Built-in positive back stop and hold-open positions available:
  - 105° Back Stop with Hold-Open
  - 105° Back Stop - no Hold-Open
  - 90° Back Stop with Hold-Open
  - 90° Back Stop - no Hold-Open
- Suitable for both Center Hung (Double or Single Acting) and Offset Doors.
- Two control valves: Closing speed and latching speed, fully adjustable after installation.
- Fits in an aluminum header or transom bar as small as 1 3/4" x 4".
- Stable hydraulic door check fluid for any climatic operation and constant lubrication.
- Optional 3/4" Spindle Available.



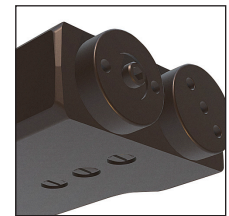
### NEW IMPROVED FEATURES



(1)



(2)



(3,4)

**Center Hung Doors:** Complete units for aluminum doors and frames are furnished with top arm assembly (adjustable 'S' side loading, "A" end loading, "K" end loading or "PT" end loading), adjustable dual purpose 3010-DP bottom pivot set for floor or threshold mounting (side or end loading) and 3010-FS anchor set with all fasteners.

"S" type side loading, "A" type, "K" type, or "PT" type end loading top arms are available for center pivoted applications.

"A" type, "K" type or "PT" type end loading and "JO" or "VO" type offset arms are optional, but must be specified.

"G" and "GE" type pivot sets are available, but must be ordered separately.












**Offset Hung Doors:** Complete units for offset pivoted or butt hinged aluminum doors and frames are furnished with a "JO" or "VO" type offset arm (may not meet handicap force requirements) and 3010-FS anchor set with all fasteners .

3010-DP dual purpose radial ball bearing bottom pivot set is standard for floor or threshold center pivoted installation. Optional 3010-GE bottom pivot sets are available, but must be ordered separately.

**International Door Closers, Inc.**

COPYRIGHT 2022 INTERNATIONAL DOOR CLOSERS, INC

D300 SERIES	TYPE	MODEL NO.
<p><b>NOTE:</b> Doors of varying sizes, or of excessive weight, or doors subject to severe wind or draft conditions, or abusive usage, refer to Series D200 Overhead Concealed Closers.</p> <p><b>SPECIFY:</b> Closer Model Number and Type of Top Arm, Anchor and/or Pivot Set.</p> <p><b>SPECIFY FINISH:</b> For 3010-JO or 3020-VO Arms AL - Satin Aluminum DU - Storefront Bronze</p>	105° Back Stop with Hold-Open	D310
	105° Back Stop - no Hold-Open	D311
	90° Back Stop with Hold-Open	D312
	90° Back Stop - no Hold-Open	D313
	3/4" SPINDLE	MODEL NO.
	105° Back Stop with Hold-Open	D310-20-A-DP
	105° Back Stop - no Hold-Open	D311-20-A-DP

D300 SERIES PARTS AND ACCESSORIES		PART NO.
	Unit Body (Specify: Spring Tension & degree of Back Stop & Hold open)	D3000-B
	"S" Type Adjustable Side Loading Top Arm Assembly (1/2" Depth Top Rail)	3010-S
	"A" Type End Loading Top Arm Assembly (1" Depth Top Rail)	3010-A
	"K" Type End Loading Top Arm Assembly (5/8" Depth Top Rail)	3010-K
	"PT" Type End Loading Top Arm Assembly (7/8" Depth Top Rail)	3010-PT
	"JO" Type Offset Top Arm Assembly Mortised Type (9/16" Depth Top Rail)	Painted Arm -Aluminum Storefront Bronze 3010-JO x AL 3010-JO x DU
<p>* JO and VO type offset arm in lieu of S, A, K &amp; PT type arms ADA opening force may not provide sufficient power to reliably close and latch a door</p>		
	"VO" Type Offset Top Arm Assembly Surface Type (7/8" Depth Top Rail)	Painted Arm -Aluminum Storefront Bronze 3020-VO x AL 3020-VO x DU
	Anchor Set (Standard)	3010-FSP
	Adjustable Dual Purpose Bottom Pivot Set (Standard)	3010-DP
	Adjustable Floor Mount Bottom Pivot Set (Optional)	3010-G
	Adjustable Threshold Mount Bottom Pivot Set (Optional)	3010-GE

\*in lieu of S, A, K, or PT arms.